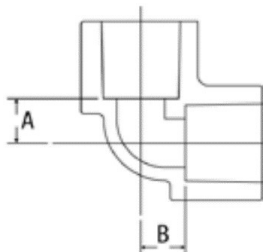
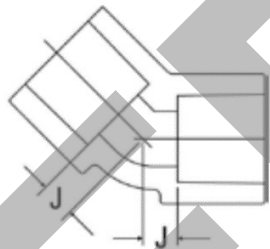


**CODO 90°
 SCH 40**


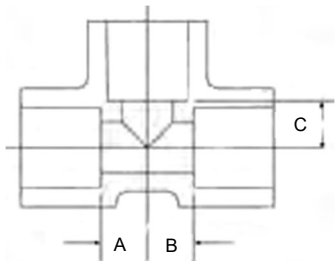
CODO 90							
Diámetro Nominal	A		B		Peso Aprox		TIPO DE UNION
	mm	inch	mm	inch	Lb	Kg	
1	17.5	0.69	17.5	0.69	0.14	0.06	S X S
1-1/4"	17.5	0.91	0.0	0.91	0.22	0.00	S X S
1-1/2"	26.9	1.06	26.9	1.06	0.41	0.19	S X S
2"	31.5	1.24	31.5	1.24	0.83	0.38	S X S
2-1/2"	38.1	1.50	38.1	1.50	1.16	0.53	S X S
3"	46.0	1.81	46.0	1.81	1.66	0.75	S X S

Conforme a:
 ASME F438 y
 ASTM F-442

**CODO 45°
 SCH 40**


CODO 45					
Diámetro Nominal	J		Peso Aprox		TIPO DE UNION
	mm	inch	Lb	Kg	
1"	9.9	0.39	0.06	0.12	S X S
1-1/4"	12.2	0.48	0.22	0.18	S X S
1-1/2"	11.9	0.47	0.30	0.36	S X S
2"	14.7	0.58	0.42	0.54	S X S
2-1/2"	16.5	0.65	0.62	1.00	S X S
3"	19.3	0.76	0.96	1.28	S X S

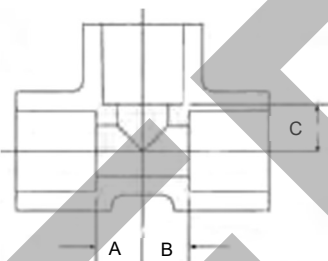
Conforme a:
 ASME F438 y ASTM F-442

TEE
SCH 40


TEE									
Diámetro Nominal	A		B		C		Peso Aprox		TIPO DE UNION
	mm	inch	mm	inch	mm	inch	Lb	Kg	
	1"	17.5	0.69	17.5	0.69	17.53	0.69	0.17	
1-1/4"	22.6	0.89	22.6	0.89	22.61	0.89	0.28	0.13	S X S X S
1-1/2"	26.7	1.05	26.7	1.05	26.67	1.05	0.58	0.26	S X S X S
2"	31.8	1.25	31.8	1.25	31.75	1.25	0.82	0.37	S X S X S
2-1/2"	38.9	1.53	38.9	1.53	38.86	1.53	1.40	0.64	S X S X S
3"	46.7	1.84	46.7	1.84	46.74	1.84	2.14	0.97	S X S X S

Conforme a:

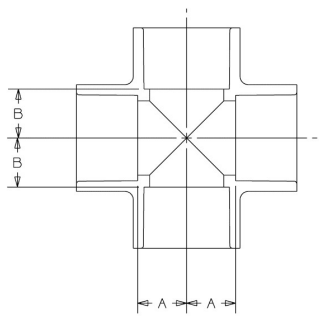
ASME F438 y ASTM F-442

TEE REDUCIDA
SCH 40


TEE									
Diámetro Nominal	A		B		C		Peso Aprox		TIPO DE UNION
	mm	inch	mm	inch	mm	inch	Lb	Kg	
	1-1/4 x 1-1/4 x 1	18.5	0.73	18.5	0.73	22.61	0.89	0.24	
1-1/2 x 1-1/2 x 1	19.6	0.77	19.6	0.77	24.38	0.96	0.54	0.24	S X S X S
2 x 2 x 1-1/2	26.9	1.06	26.9	1.06	34.80	1.37	0.86	0.39	S X S X S
2 x 2 x 1	20.3	0.80	20.3	0.80	31.75	1.25	0.72	0.33	S X S X S
2-1/2 x 2-1/2 x 2	32.0	1.26	32.0	1.26	38.86	1.53	1.32	0.60	S X S X S
2-1/2 x 2-1/2 x 1-1/2	26.9	1.06	26.9	1.06	38.86	1.53	1.21	0.55	S X S X S
2-1/2 x 2-1/2 x 1-1/4	23.1	0.91	23.1	0.91	38.86	1.53	1.12	0.51	S X S X S
2-1/2 x 2-1/2 x 1	18.8	0.74	18.8	0.74	38.86	1.53	1.05	0.48	S X S X S

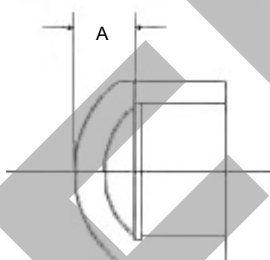
Conforme a:

ASME F438 y ASTM F-442

**CRUZ
 SCH 40**


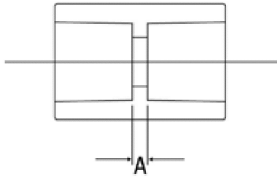
CRUZ							
Diámetro Nominal	A		B		Peso Aprox		TIPO DE UNION
	mm	inch	mm	inch	Lb	Kg	
1	19.1	0.75	19.1	0.75	0.24	0.11	S X S X S X S
1-1/2"	31.2	1.23	31.2	1.23	0.87	0.39	S X S X S X S

Conforme a:
 ASME F438 y ASTM F-442

**CAPS
 SCH 40**


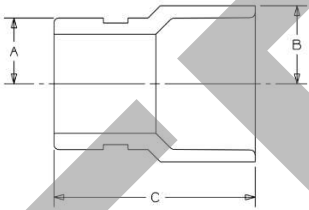
CAPS					
Diámetro Nominal	A		Peso Aprox		TIPO DE UNION
	mm	inch	Lb	Kg	
1"	9.9	0.39	0.06	0.03	S
1-1/4"	14.2	0.56	0.22	0.10	S
1-1/2"	17.3	0.68	0.30	0.14	S
2"	17.3	0.68	0.42	0.19	S
2-1/2"	30.5	1.20	0.62	0.28	S
3"	32.0	1.26	0.96	0.44	S

Conforme a:
 ASME F438 y ASTM F-442

COUPLING
SCH 40


COUPLING					
Diámetro Nominal	A		Peso Aprox		TIPO DE UNION
	mm	inch	Lb	Kg	
	1"	2.3	0.09	0.08	
1-1/2"	6.9	0.27	0.23	0.10	S X S
2"	7.1	0.28	0.40	0.18	S X S
2-1/2"	5.1	0.20	0.72	0.33	S X S
3"	5.6	0.22	1.10	0.50	S X S

 Conforme a:
 ASME F438 y ASTM F-442

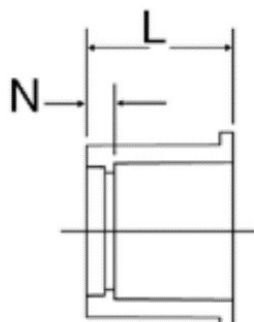
COUPLING ADAPTER RANURADO
SCH 40


COUPLING ADAPTER RANURADO									
Diámetro Nominal	A		B		C		Peso Aprox		TIPO DE UNION
	mm	inch	mm	inch	mm	inch	Lb	Kg	
	1-1/4"	21.1	0.83	26.4	1.04	75.69	2.98	0.17	
1-1/2"	24.1	0.95	29.7	1.17	80.01	3.15	0.20	0.09	G X S
2"	30.0	1.18	36.3	1.43	85.60	3.37	0.30	0.14	G X S
2-1/2"	36.3	1.43	44.2	1.74	92.96	3.66	0.52	0.24	G X S
3"	88.9	3.50	—	—	—	—	0.72	0.33	G X S

 Conforme a:
 ASME F438 y ASTM F-442

BUSHING REDUCTOR

SCH 40



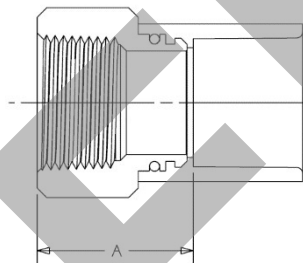
BUSHING							
Diámetro Nominal	L		N		Peso Aprox		TIPO DE UNION
	mm	inch	mm	inch	Lb	Kg	
1-1/4 x 1	35.8	1.41	7.4	0.29	0.08	0.04	SPG X S
1-1/2 x 1-1/4	39.1	1.54	6.9	0.27	0.07	0.00	SPG X S
1-1/2 x 1	39.1	1.54	9.9	0.39	0.12	0.05	SPG X S
2 x 1-1/2	42.2	1.66	6.9	0.27	0.16	0.07	SPG X S
2 x 1-1/4	42.2	1.66	10.2	0.40	0.20	0.09	SPG X S
2 x 1	42.2	1.66	13.2	0.52	0.22	0.10	SPG X S
2-1/2 x 1	49.3	1.94	20.6	0.81	0.47	0.21	SPG X S

Conforme a:

ASME F438 y ASTM F-442

ADAPTER CON INSERTO METALICO ROSCADO

SCH 40



CODO 45						
Diámetro Nominal	A		Peso Aprox		TIPO DE UNION	
	mm	inch	Lb	Kg		
1 x 1/2	18.5	0.73	0.18	0.12	S X NPT	

Conforme a:

ASME F438 y ASTM F-442